



**RICOH**  
imagine. change.

GreenLine™ recirculation printing systems: supports the environment, works for your budget too





# What is Ricoh's GreenLine™ Solution?



Since 2012, with GreenLine™ brand Ricoh goes further than just recycling: we totally “revitalize” multifunctional products.

A range of thorough overhauling and testing procedures ensure that every Ricoh certified GreenLine™ device delivers the reliable, productive and efficient service that you’d expect from a brand-new Ricoh device.

These products are economical and their resource recirculation process has reduced impact on the environment: good for your wallet, good for the planet.

## GreenLine™: a sustainable product that supports your business

- ✓ A GreenLine™ device will enable you to minimize document production expenses without sacrificing efficiency in your workflows.
- ✓ Our strict remanufacturing standards guarantee invariable quality, making every GreenLine™ device as flawless as the next.
- ✓ By acquiring a GreenLine™ resource recirculation product you are not just getting a cost-efficient solution. You are also making a clear statement about your organization's eco commitment.





Committed to helping you further reduce your environmental impact with our GreenLine™ devices



# Ricoh's approach to resource conservation

The Ricoh Group contributes to the development of a sustainable society based on its Comet Circle™ concept established in 1994

## The traditional model

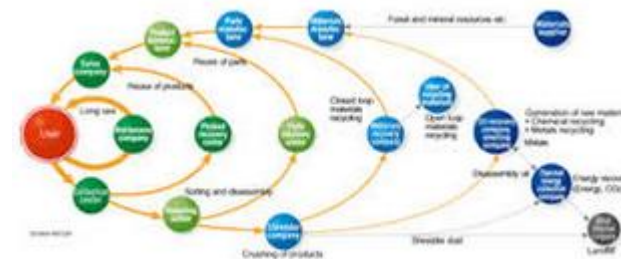
The traditional linear model of consumption leads to great losses and negative effects on the environment.



With a Take – Make – Dispose methodology, old devices are tossed away after they are no longer needed or replaced leading to greater expenditures for customers, higher supply disruptions, and more waste.

## The Ricoh way

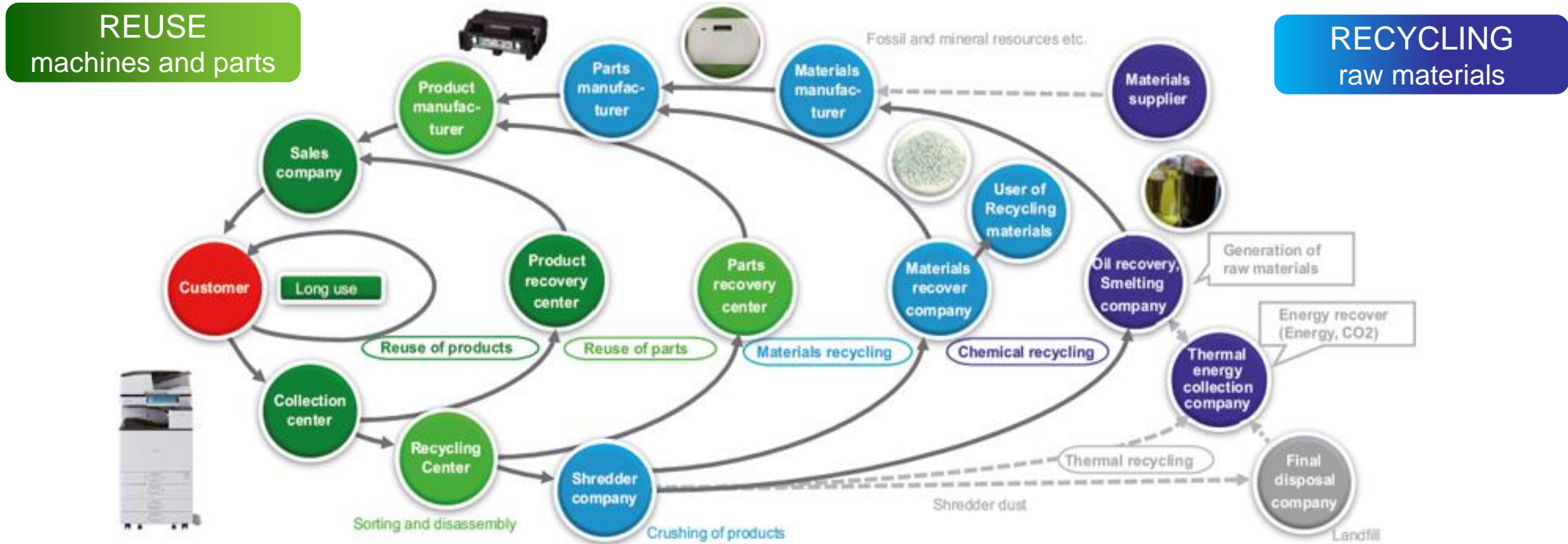
Since the initiation of the Comet Circle™ in 1994, the Ricoh Group has built a system under which used products are recovered and reintroduced into the market, giving way to more efficient use of resources.



The Ricoh Comet Circle™ expresses the greater picture of our environmental impact reduction scheme, which includes not only the scope of the Ricoh Group but also the entire lifecycle of our products.

# Ricoh's approach to resource conservation

The Ricoh Group contributes to the development of a sustainable society based on its Comet Circle™ concept established in 1994






# Ricoh's approach to resource conservation

GreenLine™ products range significantly reduced carbon footprint by reusing or recycling existing parts and components



**80,1 %** 

of existing parts and components by weight of the original MP C3003 are reused


**GreenLine  
MP C3003  
A3 COLOR**



**94,4 %**

of existing parts and components by weight of the original MP C3003 are reused or recycled



**91,2 %** 

of existing parts and components by weight of the original MP 301 are reused

**GreenLine  
MP 301  
A4 B&W**



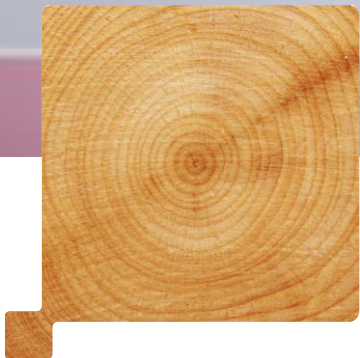
**95,0 %**

of existing parts and components by weight of the original MP 301 are reused or recycled



*Study carried out in September 2020 by Ricoh Industrie France production site  
Total weight of the MP C3003 model = 93 kg, approximately 88 kg of reused or recycled materials  
Total weight of the MP 301 model = 26 kg, approximately 25 kg of reused or recycled materials  
Details of data per type of materials available on request*





**GreenLine™: a quality you can count on since 2012**

## You demand optimum print quality, reliability and high productivity !

- ✓ That's what **Ricoh's rigorous selection and recirculation process delivers for each GreenLine™ product.** Only those **products that have been professionally maintained by highly-skilled Ricoh engineers** throughout their lifetime and that have high remaining lifetime expectancy are eligible for the GreenLine™ recirculation process.
- ✓ Following this selection, all GreenLine™ assets are going through a **comprehensive Ricoh factory production process, independently audited** and compliant with the BS8887:220 standard requirements for the process of remanufacture. Every machine undergoes the same quality assurance process as a newly manufactured device.
- ✓ Ricoh provides the **same level of service and the same warrantee with our GreenLine™ device that we provide with our new equipment.**

# A comprehensive production process

*Machines back from the field that have been maintained by highly-skilled Ricoh engineers*



## 1. Selection

Only machines with high remaining lifetime expectancy are eligible for the GreenLine™ recirculation process



## 2. Dismantling

Covers and sub-assemblies are removed and cleaned.

Disassembled parts are thoroughly cleaned and tested



## 3. Remanufacturing

Every critical components for the machine's performance are all replaced.

Data is removed beyond recovery with certified sanitized software.

Machines firmwares updated to the latest available version.



## 4. Quality check

Image quality tests are performed using as new Ricoh product targets

Samples and inspection results retained as quality record



## 5. Warrantee as new

Same warrantee and same services than a new product



# A Ricoh factory certified product

All our GreenLine™ products are remanufactured in our European Green Center located in France



With more than 30 years of manufacturing experience, the Ricoh European Green Center located at Ricoh Industrie France provide original equipment manufacturing quality assured products, delivering as new reliability performance.

# A Ricoh factory certified product

## From quality to industrial excellence

- ✓ Ricoh Industrie France is ISO 9001 certified for quality excellence, ISO 14001 certified for its environmental management system and ISO 50001 certified for its energy management system. Ricoh Industrie France is also committed to Excellence by the inspiring EFQM model (European Foundation for Quality Management). Last but not least, Ricoh Industrie France has been once again scored “GOLD” in 2019 by EcoVadis Corporate Social Responsibility (CSR) Assessment.
- ✓ In addition, our comprehensive GreenLine™ production process is independently audited by the British Standards Institution has compliant since 2012 to « BS8887-220:2010 », the process of remanufacturing specifications.



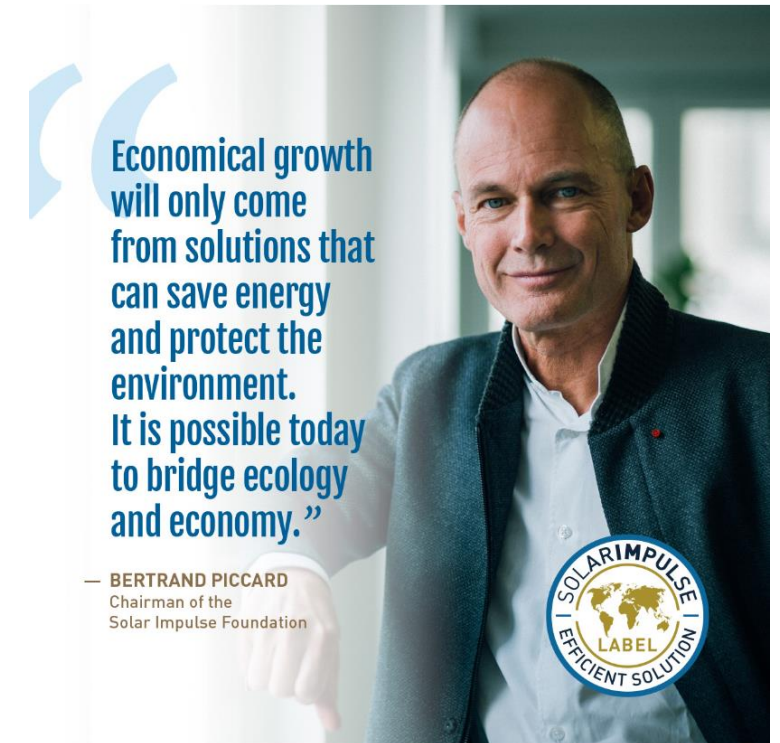
# A Ricoh factory certified product



**RICOH**  
imagine. change.

## GreenLine has received in 2021 the “Solar Impulse Efficient Solution” Label, an award for clean and profitable solutions

- ✓ GreenLine™ (remanufactured at Ricoh Industrie France) was attributed the “**Solar Impulse Efficient Solution Label**” following an assessment performed by external independent experts and based on verified standards !
- ✓ It is thereby **joining the #1000solutions challenge**, an initiative by the Solar Impulse Foundation to select solutions that meet high standards in profitability and sustainability and present them to decision-makers to fast-track their implementation.



<https://solarimpulse.com/efficient-solutions/greenline-printing-solution>



Our GreenLine™ products range

# Our GreenLine™ products range

(Regular quality level)



**RICOH**  
imagine. change.

**A4**

**A3**

**MFP MONOCHROME**



MP 301 SPFGL

**Stella C5**

25 CPM



MP 2554 SPGL  
PB / PB+FIN

**Corona C1c**

30 CPM



MP 3054 SPGL  
PB / PB+FIN

**Corona C1d**

40 CPM



MP 4054 SPGL  
PB / PB+FIN

**Corona C1f**

50 CPM



MP 5054 SPGL  
PB / PB+FIN

**Corona C1g**

**MFP COLOR**



MP C 305 SPGL  
MP C 305 SPFGL

**Griffin C1**

20 CPM



MP C 2003 SPGL  
PB / PB+FIN

**Metis C1y**

25 CPM



MP C 2503 SPGL  
PB / PB+FIN

**Metis C1z**

30 CPM



MP C 3003 SPGL  
PB / PB+FIN

**Metis C1a**

35 CPM



MP C 3503 SPGL  
PB / PB+FIN

**Metis C1b**

45 CPM



MP C 4503 SPGL  
PB / PB+FIN

**Metis C1c**

55 CPM



MP C 5503 SPGL  
PB+FIN

**Metis C1d**

PB: paper bank / feed unit  
FIN: finisher



# Our GreenLine™ products range

(High quality level)



**RICOH**  
imagine. change.

**A4**

**A3**

**MFP MONOCHROME**



**MFP COLOR**



MP C 306 SP and SPFGL  
MP C 307 SP and SPFGL

**Griffin C2 / C3**

25 CPM



**Corona C1c**

MP 2554 SPGL  
PB / PB+FIN



**Corona C1,5c**

MP 2555 SPGL  
PB / PB+FIN

30 CPM



**Corona C1d**

MP 3054 SPGL  
PB / PB+FIN



**Corona C1,5d**

MP 3055 SPGL  
PB / PB+FIN

40 CPM



**Corona C1e**

MP 4054 SPGL  
PB / PB+FIN



**Corona C1,5e**

MP 4055 SPGL  
PB / PB+FIN

50 CPM



**Corona C1f**

MP 5054 SPGL  
PB / PB+FIN



**Corona C1,5f**

MP 5055 SPGL  
PB / PB+FIN

20 CPM



**Metis C1y**

MPC 2003 SPGL  
PB / PB+FIN



**Metis C2y**

MPC 2004 SPGL  
PB / PB+FIN

30 CPM



**Metis C1a**

MPC 3003 SPGL  
PB / PB+FIN



**Metis C2a**

MPC 3004 SPGL  
PB / PB+FIN

45 CPM



**Metis C1c**

MPC 4503 SPGL  
PB / PB+FIN



**Metis C2c**

MPC 4504 SPGL  
PB / PB+FIN

55 CPM



**Metis C1d**

MPC 5503 SPGL  
PB / PB+FIN



**Metis C2d**

MPC 5504 SPGL  
PB / PB+FIN

**PB: paper bank / feed unit**  
**FIN: finisher**

# The 3 main reasons to purchase a Ricoh GreenLine™ product



Competitive price



Same warranty and same services than a new product



Reinforce your sustainability policy





Want to know more ?

# Check out our GreenLine™ video



Available on **YouTube**

[https://www.youtube.com/watch?v=BG\\_1KtzqEGc](https://www.youtube.com/watch?v=BG_1KtzqEGc)



#### **SDG n°12**

By 2030, substantially reducing waste generation through prevention, reduction, recycling and reuse (SDG target 12.5).

#### **RICOH GROUP COMMITMENT**

Contribute to a circular economy by promoting the collection and recycling of used products and the utilization of recycled global resources.

#### **RICOH INDUSTRIE FRANCE CONTRIBUTION**

By being the European GreenLine™ center, we embrace the circular economy concept through creation of new values to our customers.



# Visit our European Green Center in France



Established in 1987, the site of Ricoh Industrie France in Colmar sets the pace: respect for nature is indeed very noticeable. Located between the plain of Alsace and the hillsides of the vineyards, the factory blends beautifully in this environment. This harmonious feeling is not for the eyes only. By being the Ricoh European Green Center, this production plant circular economy oriented is constantly working to minimize the impact of its activities on this environment.

OE	ISO 9001 Certification	ISO 14001 Certification	FSC Certification	OEA Agreement	BSI 8887-220 Certification	ISO 50001 Certification	PEFC Certification	ISO 9001 Certification	ISO 14001 Certification
	(1993) Quality Management System (1987 Version)	(1997) Environmental Management (1996 Version)	(2007) Forest Stewardship Council for our thermal papers	(2010) Authorised Economic Operator (to secure and facilitate global trade)	(2012) For the GreenLine™ Activity	(2013) Energy Management (2011 Version)	(2014) Programme for the Endorsement of Forest Certification	(2015) Quality Management System (2015 Version)	(2015) Environmental Management (2015 Version)

# Visit our European Green Center in France



**RE 100**

#### SDG n°7

By 2030, increase substantially the share of renewable energy in the global energy mix (SDG target 7.2)

#### RICOH GROUP COMMITMENT

At least 30% of the electricity used in its business with renewable energy by 2030.

#### RICOH INDUSTRIE FRANCE CONTRIBUTION

Since April 2018, the building including the GreenLine™ process and other green oriented activities is powered with 100% renewable energy.



**15** LIFE ON LAND



*Among many other green initiatives, Ricoh Industrie France is very proud of its partnership running since 2015 with the company ALTERNATURE for ECO-PASTURE - an alternative solution for the ecological management of environments by rustic breeds of herbivorous animals such as sheep – avoiding usage of gas motorized engine !*

For more details: <https://www.lalsace.fr/haut-rhin/2018/07/31/des-moutons-au-milieu-des-bureaux>

The Ricoh Group endeavors to resolve social issues through business, reinforce our operational underpinnings, and contribute to society, and will help to reach Sustainable Development Goals (SDGs) agreed to by the international community.

# Discover our SDGs showroom !



## What are the Sustainable Development Goals?

The Sustainable Development Goals (SDGs), also known as the Global Goals, were adopted by all United Nations Member States in 2015 as a universal call to action to end poverty, protect the planet and ensure that all people enjoy peace and prosperity by 2030.

The 17 SDGs are integrated—that is, they recognize that action in one area will affect outcomes in others, and that development must balance social, economic and environmental sustainability.

### Sustainable Development Goals



The Ricoh Group endeavors to resolve social issues through business, reinforce our operational underpinnings, and contribute to society, and will help to reach Sustainable Development Goals (SDGs) agreed to by the international community.

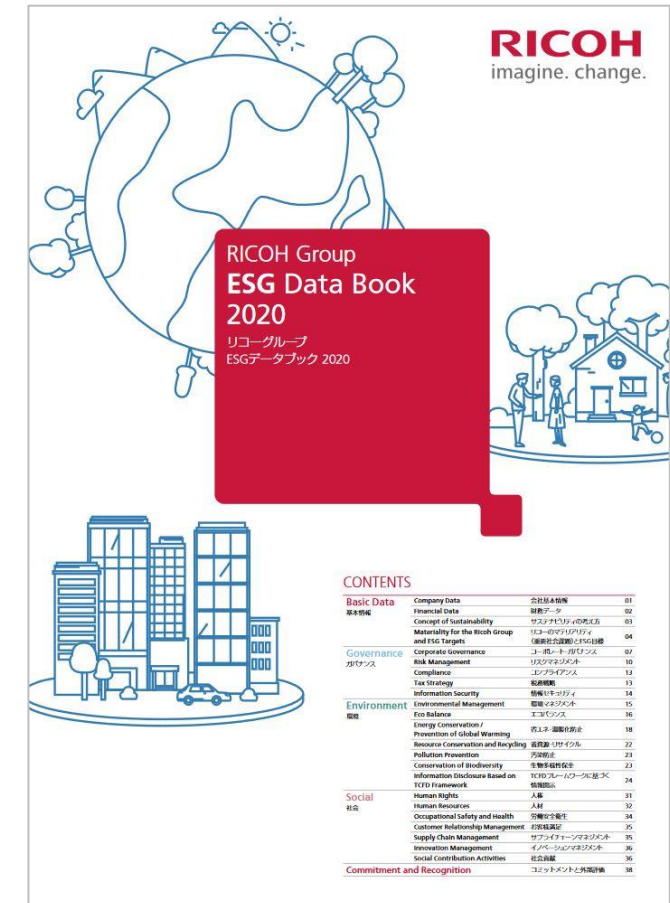
# Download our Ricoh Group Sustainability reports

The Integrated Report and the Environmental, Social and Governance (ESG) Data Book disclose overall ESG information for the Ricoh Group.

Feedback from stakeholders on various aspects of its corporate activities helps management to improve further and enhance corporate value.



Ricoh Group Integrated report 2020



Ricoh Group ESG Data Book report 2020

For more details:

[https://www.ricoh.com/-/Media/Ricoh/Sites/com/sustainability/databook/pdf/esg\\_databook.pdf](https://www.ricoh.com/-/Media/Ricoh/Sites/com/sustainability/databook/pdf/esg_databook.pdf)

[https://www.ricoh.com/-/media/Ricoh/Sites/com/about/integrated-report/pdf2020\\_e/all\\_en.pdf](https://www.ricoh.com/-/media/Ricoh/Sites/com/about/integrated-report/pdf2020_e/all_en.pdf)



